



## Getting Started with Cypress VUE

Date	Dec 21, 2022
------	--------------

Table of Contents

Log In and Account Overview ..... 2

Personalizing Workspaces..... 4

Using Map ..... 5

Using Tracks Panel ..... 6

    Using Tracks .....7

    Map Features ..... 8

    Trips Page..... 10

    Track Points Page..... 11

    Track Timeline Page.....12

Geofences.....13

    Geofence Selection & Shape.....13

Working with Reports ..... 14

## Log In and Account Overview

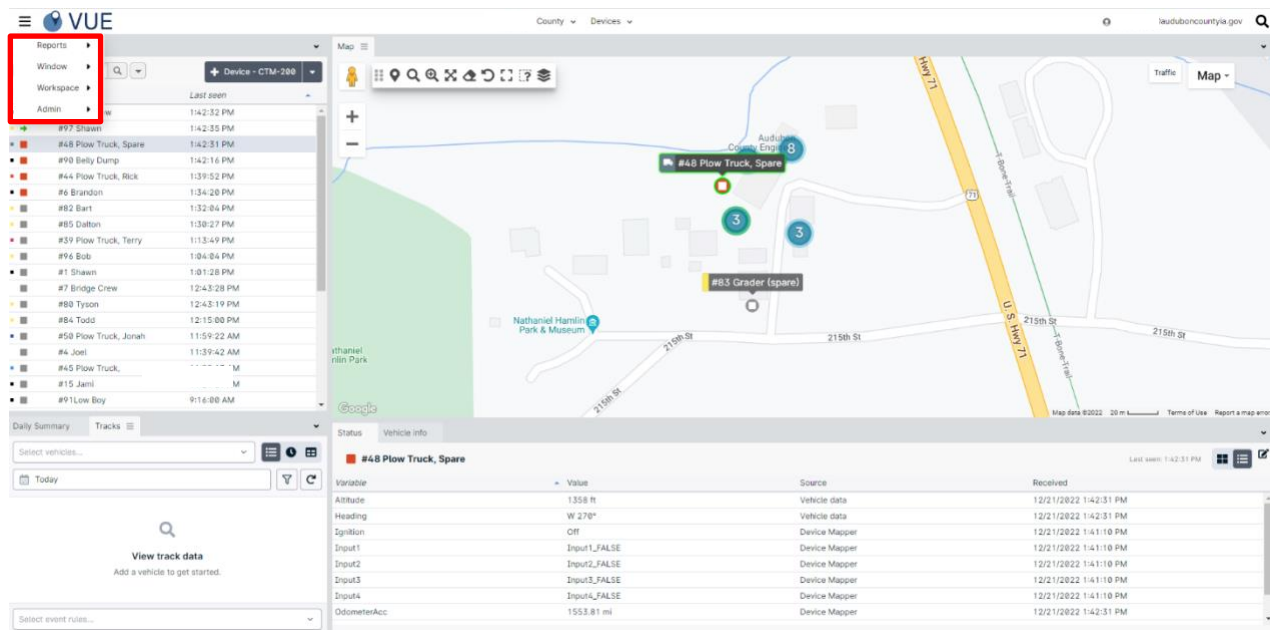
To access your Cypress VUE account, open a web browser and enter the URL provided by our sales or support team.



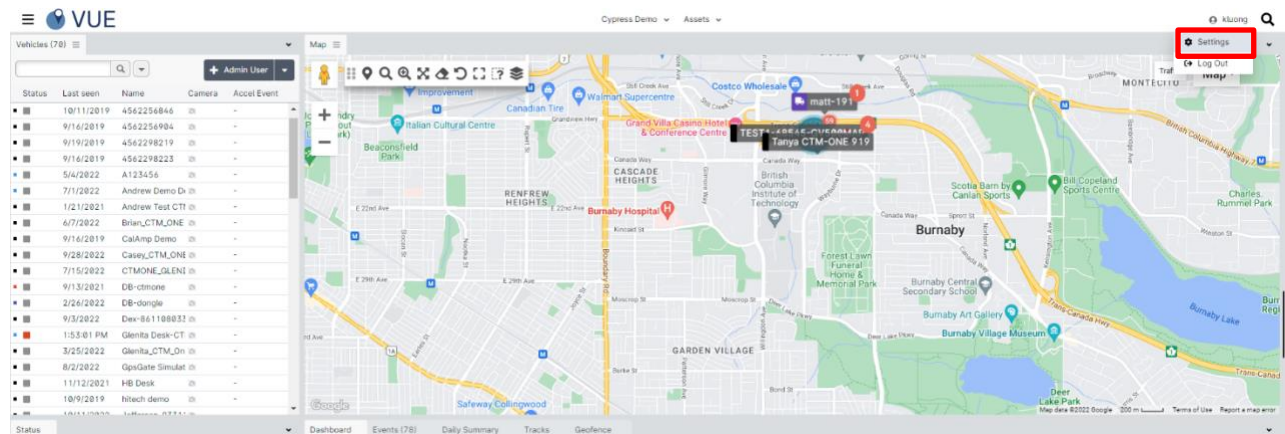
1. Enter the username (email address) and temporary password provided to you.
2. Once logged in, you will see the standard workspace setup that you can customize.

The main menu is displayed as a hamburger menu icon, consisting of:

- Reports
- Window
- Workspace
- Admin

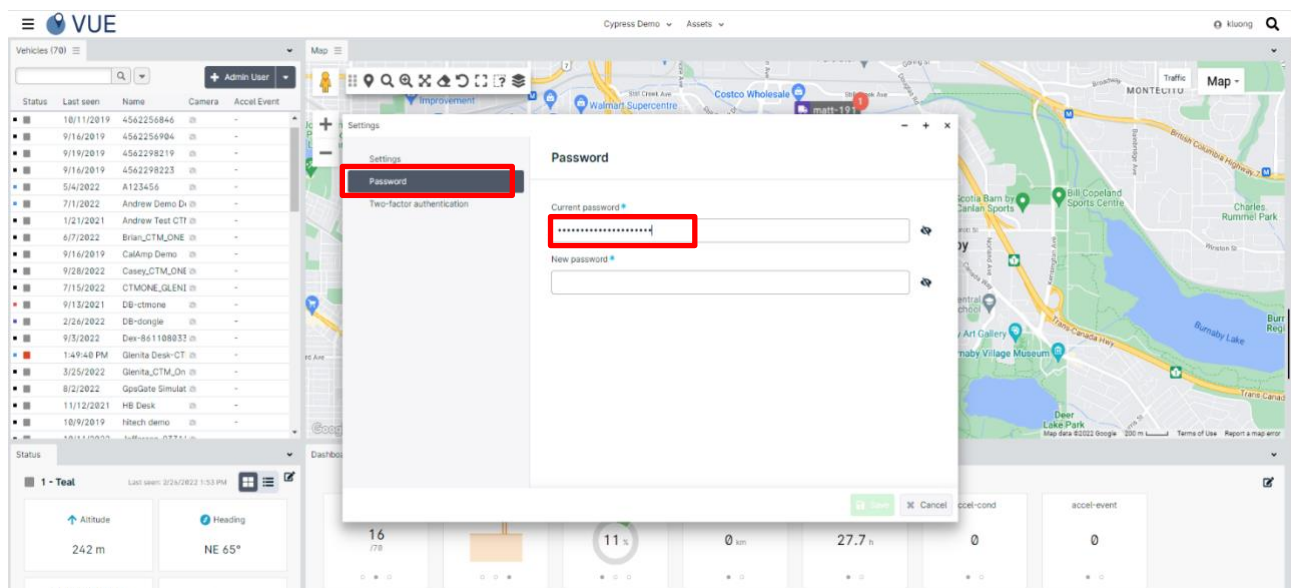


You will be assigned a default password. Upon login, please change the password by hovering over your username on the far right-hand side, click on **Settings > Password**.



Enter the current password, then enter and confirm your new password. Hit **Save**.

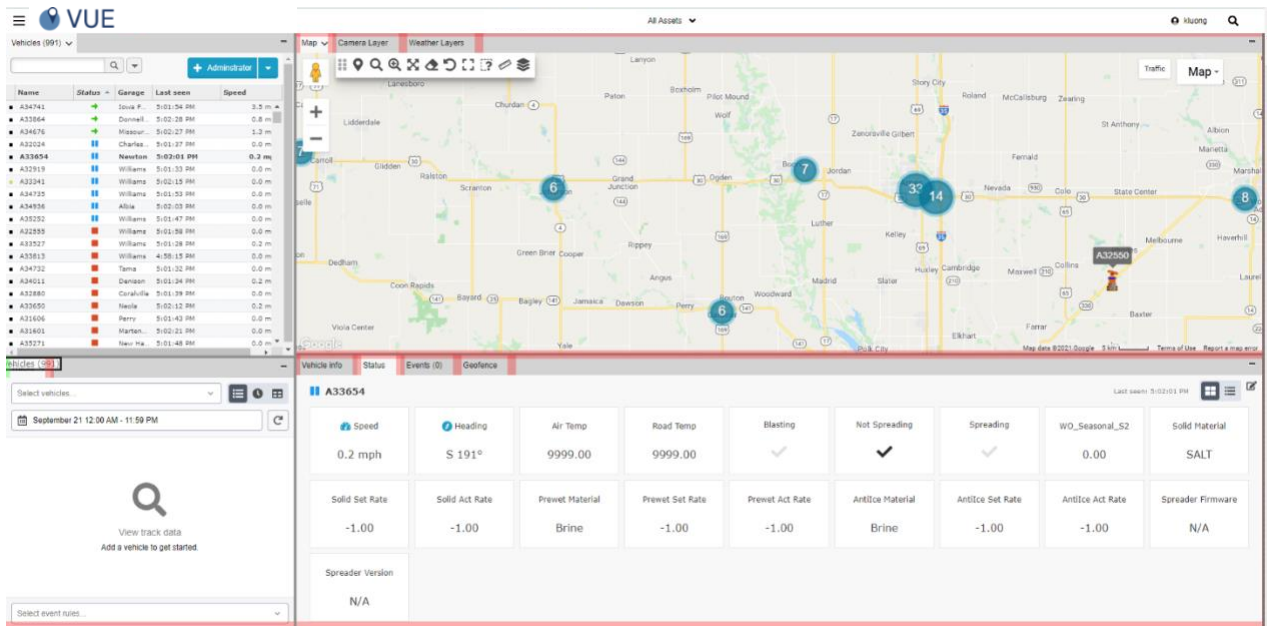
**Note:** Passwords are case-sensitive and can be a series of letters, numbers, and symbols.



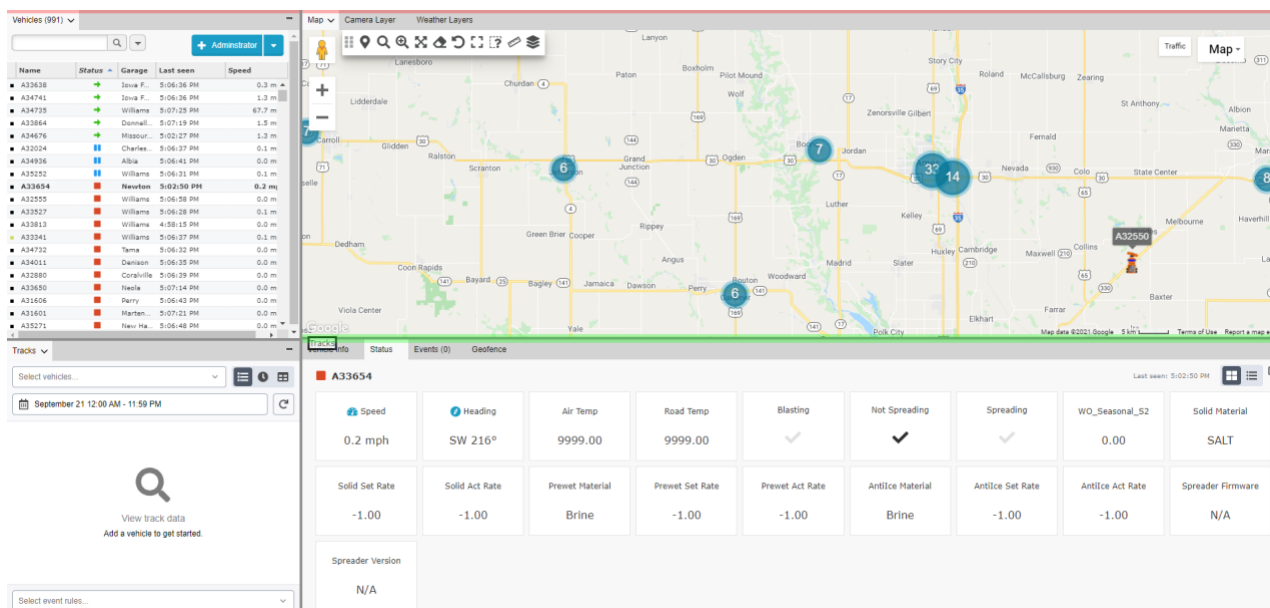
## Personalizing Workspaces

All Panels in your Workspace can be moved to different locations.

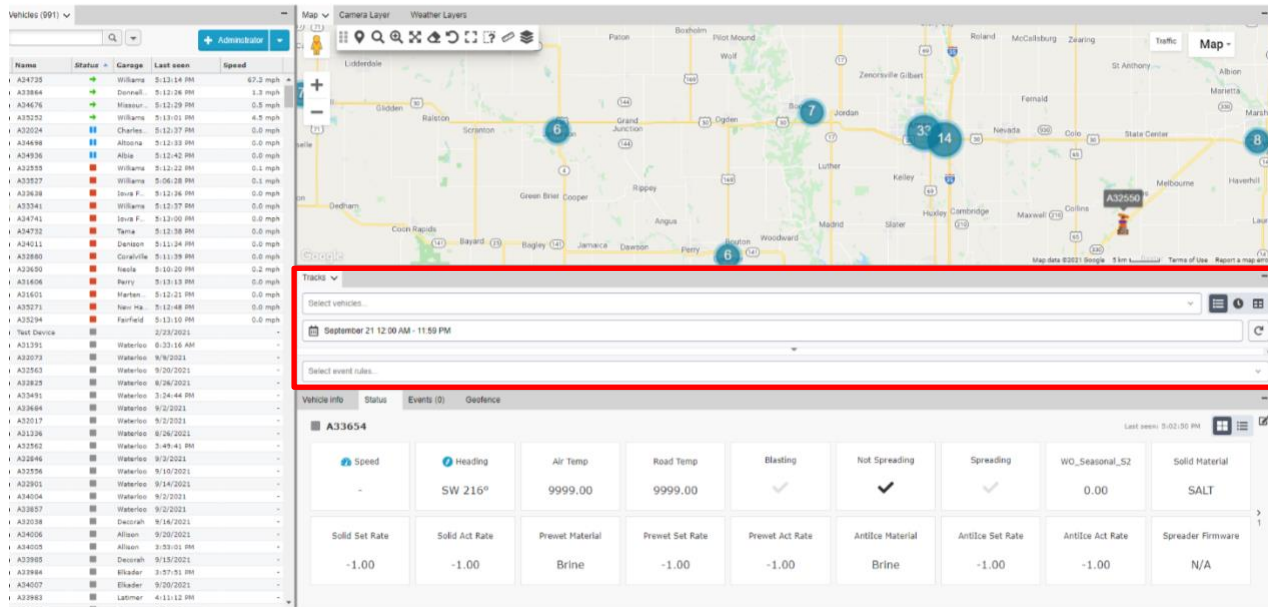
Left click and hold until the edges of each Window go red as shown below.



While still holding down the left mouse button, drag this tab to the new location you want to view that window - the new tab will turn green.

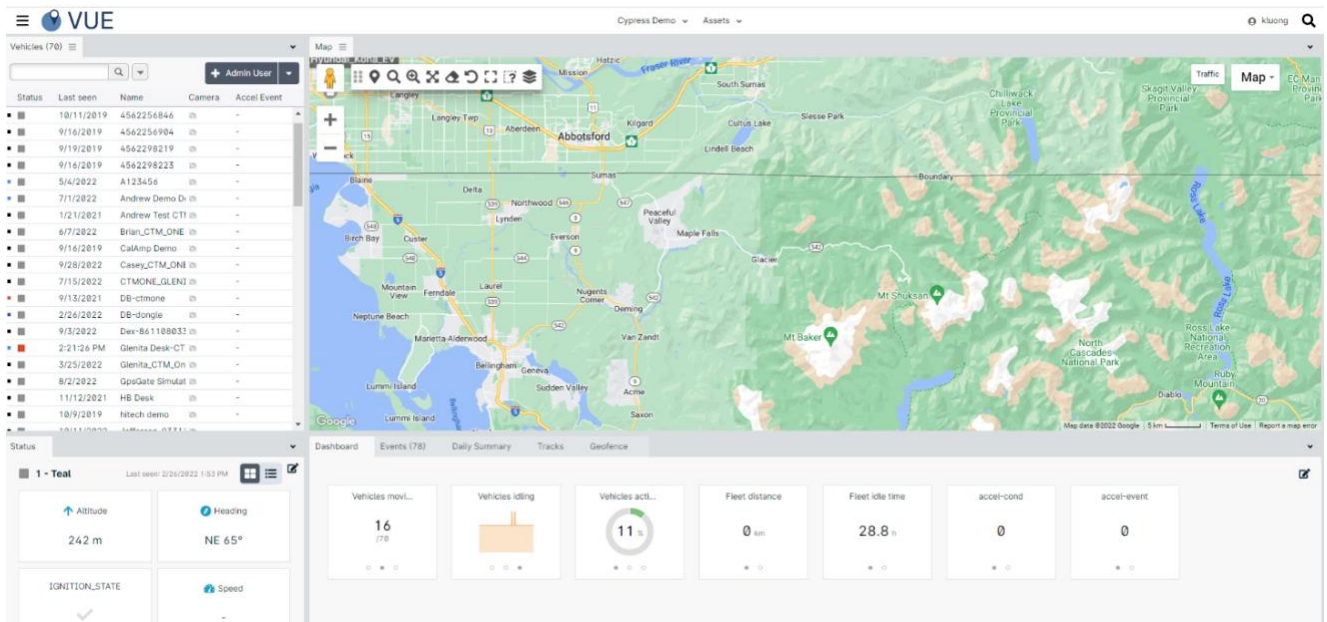


The tab will now show in this new location as the Tracks tab is now located below the Map view.



## Using Map

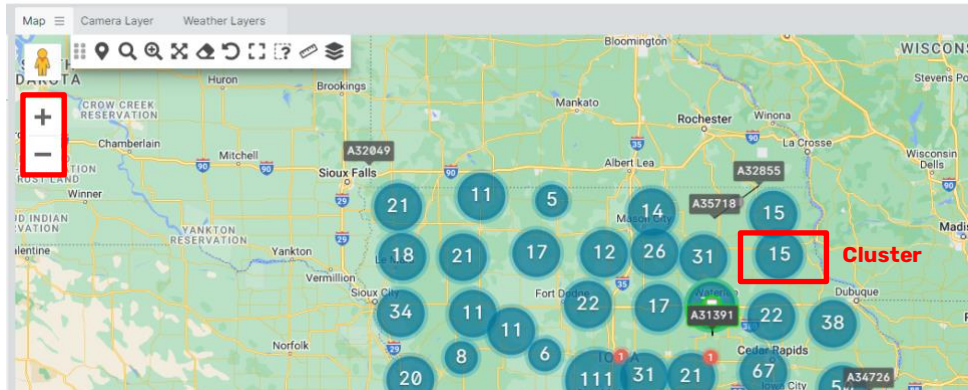
Upon login, the map-based webpage is displayed as shown below. The default map is a Google Map with pan/zoom, satellite, and street-view features.





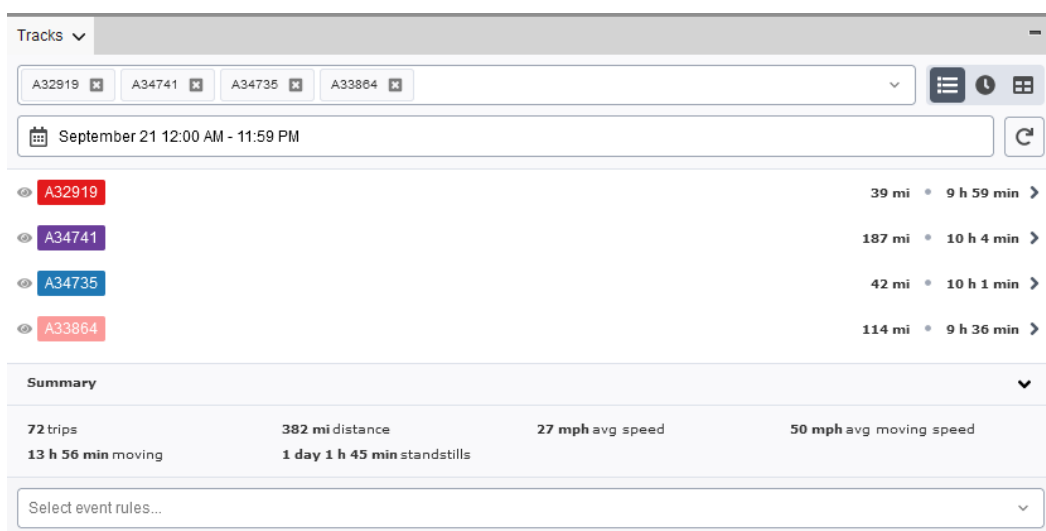
You can select an area grouping of vehicles by choosing a **Cluster** as seen below. The **Cluster** shows the total number of vehicles within the area. The clustering will adjust based on your map zoom level. As you zoom in, clusters will separate into smaller groupings.

**To zoom in or out**, use the scroll wheel on your mouse or click on the **[+]** or **[-]** button on the map zoom slider bar, located on the lower right-hand side of the map. Click and drag anywhere on the map to move it around. Double click any individual point on the map to zoom in to that area.



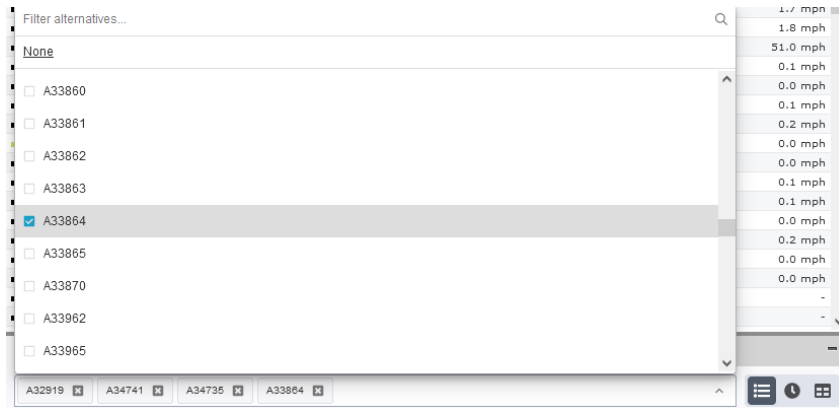
## Using Tracks Panel

The Tracks panel lets you see and interact with historical fleet data. It consists of the Trips page, the Track Points page, and the Timeline page. Historical data is also displayed on the map. The data you select is used for all three pages.



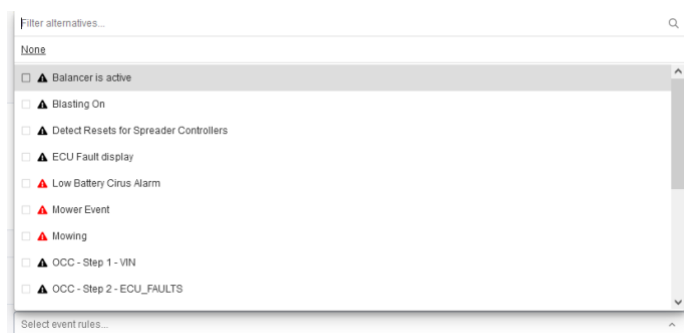
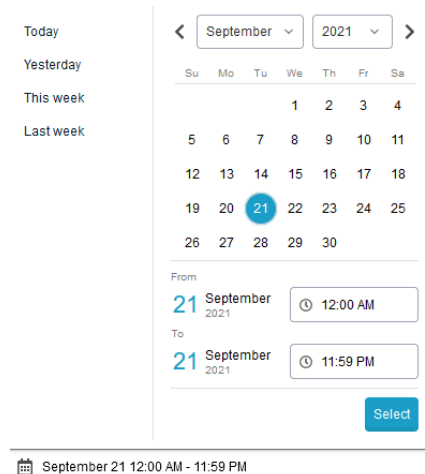
## Using Tracks

You can control the data you see on all Tracks pages by picking the vehicles, the date range, and the event rules that are relevant.



**Vehicles:** Use the searchable multi-select field inside the panel. You can also use the dropdown to scroll and select a vehicle

**Date picker:** Use the date picker to change date ranges. The default time range goes from midnight to midnight. Quick selections are available in the date picker with common date ranges. Trips are cropped according to your selected dates/times.



**Event rules:** Select event rules at the bottom of the Tracks panel. Selected event rules are saved to the workspace, so you can pick back up where you left off the next time you log in.



**Refreshing Data:** If you're working with very recent data, you can manually refresh the data as needed. Simply click the refresh button on any of the Tracks pages.

**Note:** You only update the track data in your current time span when using the refresh button. If you want to get all data up until the latest track point, set your end time to a later time today.

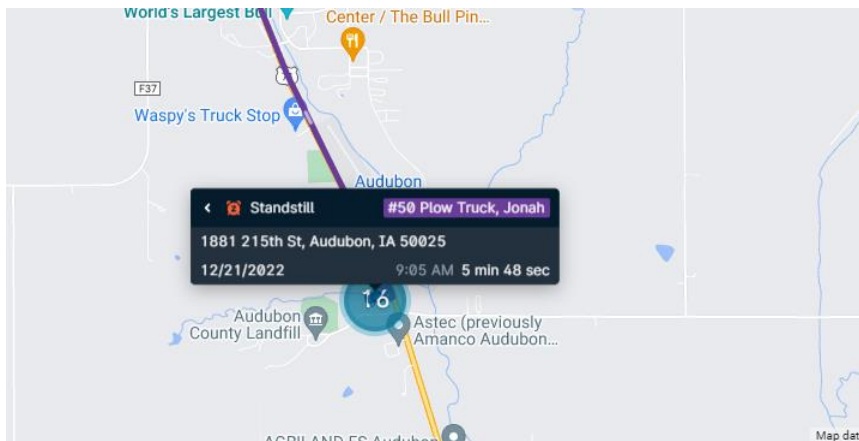


## Map Features

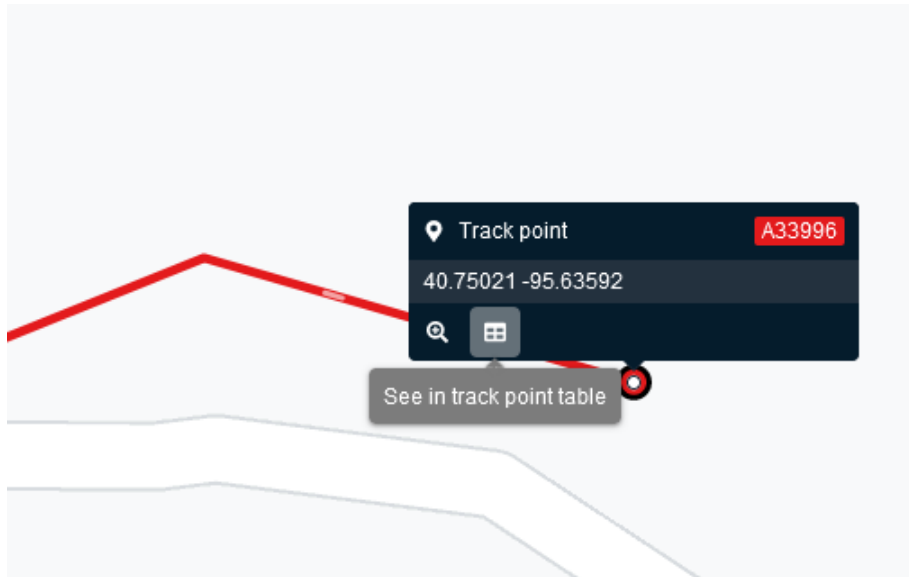
The map zooms to bounds when you change the vehicle visibility or the visible event rules.

### Events, standstills, and track points

The map also clusters standstills and events that are close to each other. Click on the cluster or zoom in to see individual standstills or events. Click on individual events or standstills to see more information.

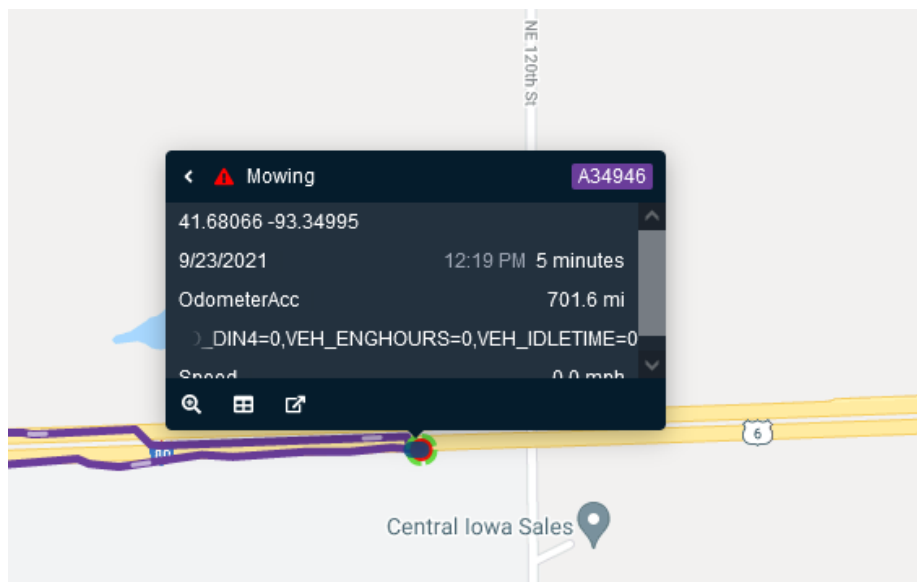


Click on a track point map marker on the map for more information on the location. You can also click one of the quick action buttons to center on the map or see the track point in the track points table.



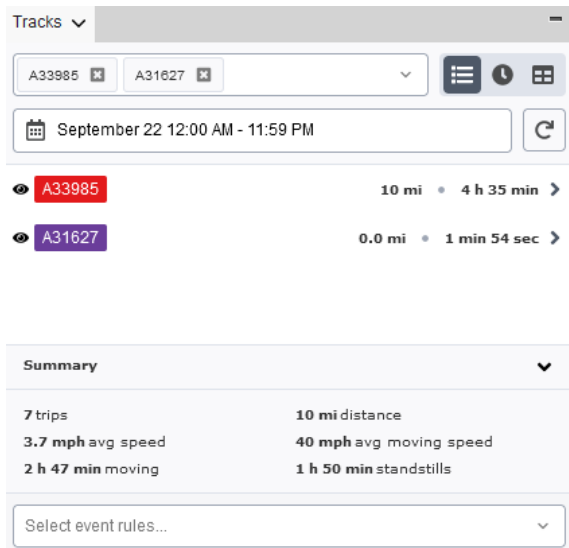
Click on an event to access quick actions. You can:

- Center it on map
- See it in track points table
- See it in event panel



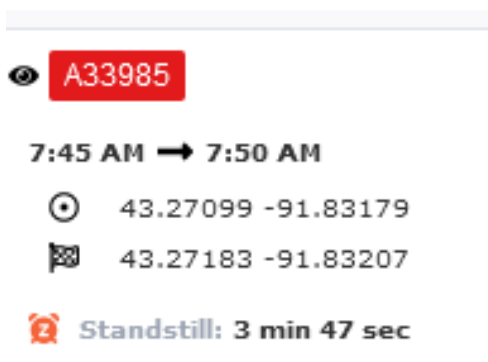
## Trips Page

The Tracks Trips page provides a quick historical overview. It includes summarized trip data, start, and stop addresses, duration, idling times, and more.



Select which trips are visible on the map with the eye icon next to the vehicle name.

**Note:** if there is no data for the selected vehicle, the vehicle cannot be selected as visible.



## Track Points Page

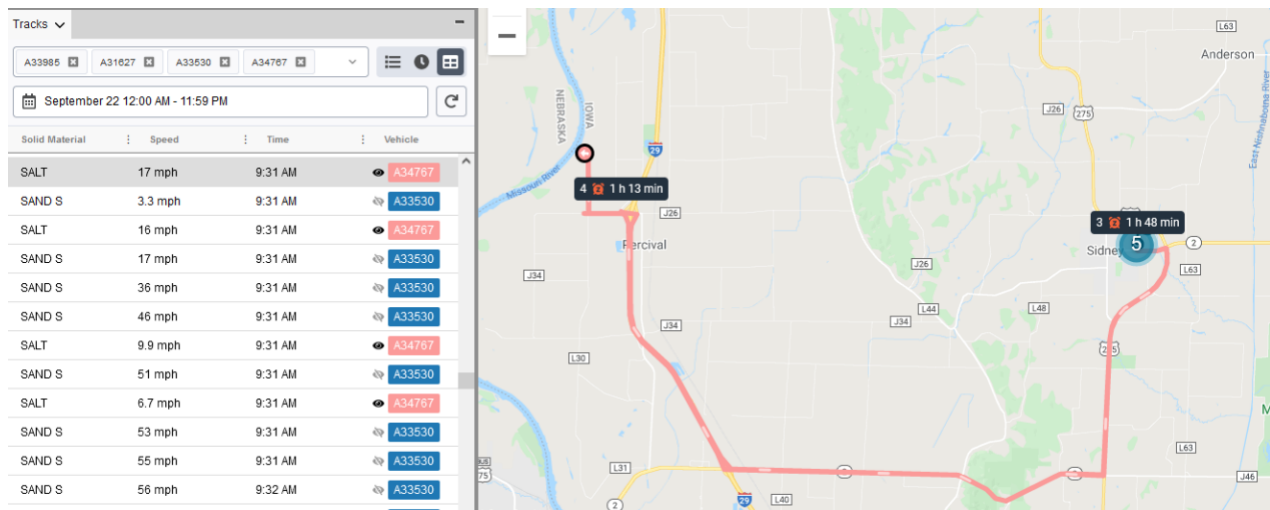
The Tracks Points page shows a detailed view of trips with individual track points.

The headers can be resized by dragging. Right-click on the header to add or remove data column.

Click the eye icon next to a vehicle to display or hide it.

Solid Material	Speed	Time	Vehicle
SALT	17 mph	9:31 AM	A34767
SAND S	3.3 mph	9:31 AM	A33530
SALT	16 mph	9:31 AM	A34767
SAND S	17 mph	9:31 AM	A33530
SAND S	36 mph	9:31 AM	A33530
SAND S	46 mph	9:31 AM	A33530
SALT	9.9 mph	9:31 AM	A34767

Click on a track point in the track points list to see the historical map marker on the map.

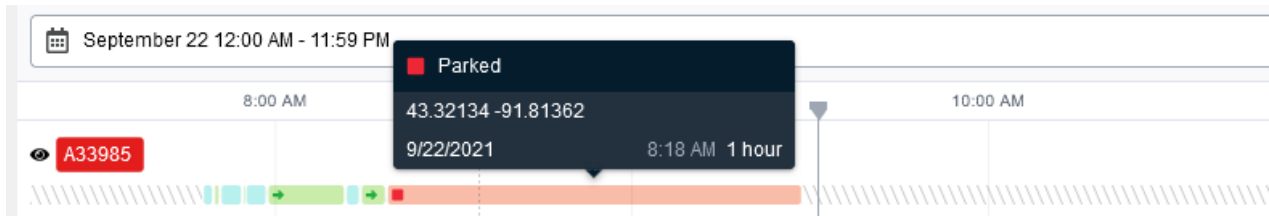


As you work, the map responds. The map zooms to bounds when you change vehicle visibility to show the full tracks for all selected vehicles.

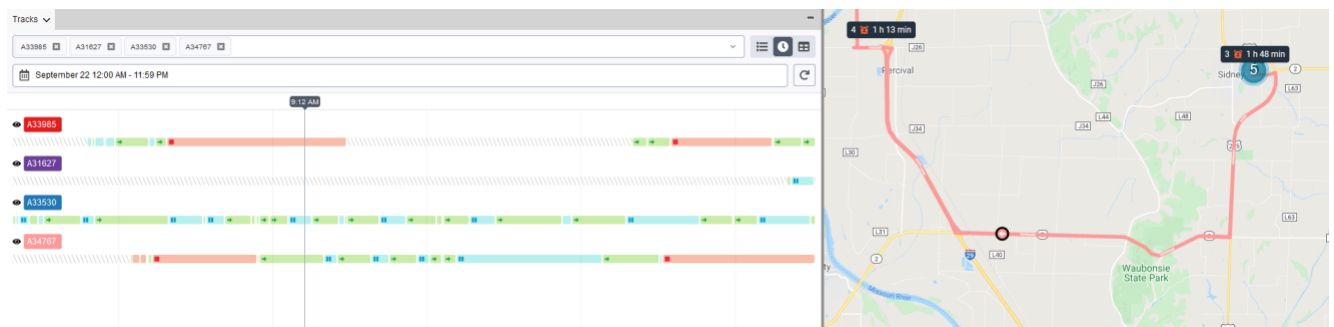
## Track Timeline Page

The Tracks Timeline is an interactive timeline with vehicle status, events, and the ability to view historical positions on the map.

The timeline shows the status changes for each vehicle. You can hover over a vehicle timeline to see details. Historical events (including closed, open, and ongoing events) also display on the timeline for the event rules selected.



Click the timeline and then drag the play head to see historical map markers on the map.



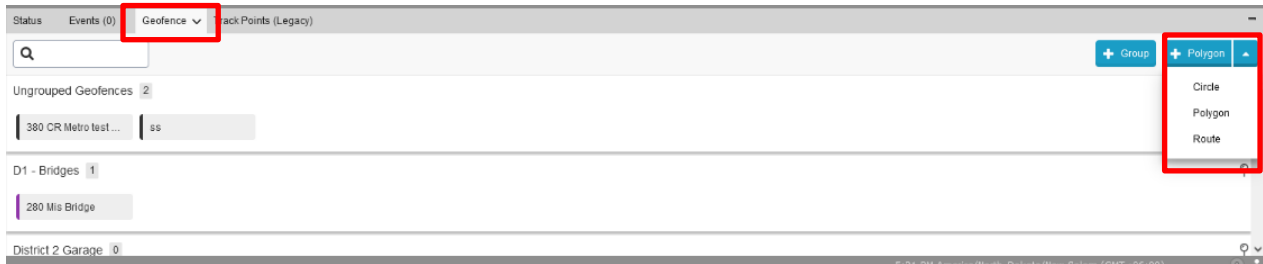
Check the brush chart (scroll bar) in the footer of the timeline to see if you've zoomed in on the timeline. You can also use it to drag and rescale the timeline.



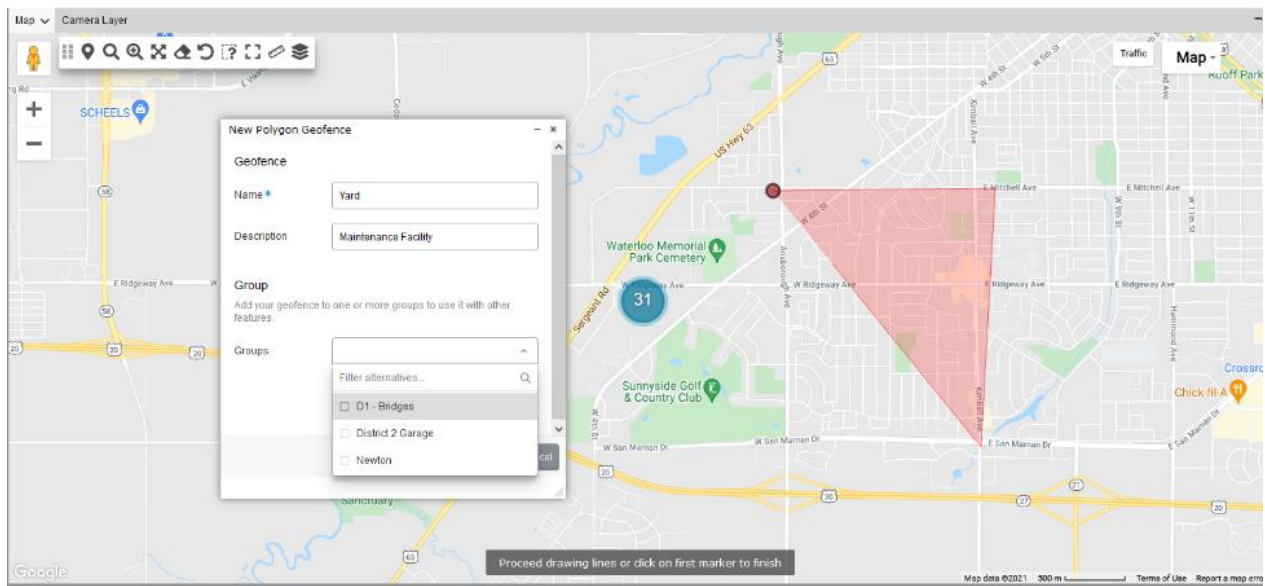
## Geofences

### Geofence Selection & Shape

Under the Window View, select **Geofence**. On the right side of the window at the bottom of the map, select the type of geofence of choice - it can be a circle, polygon, or a route as shown below.



Once the type of geofence is selected, label the area, and specify if the geofence belongs to a group or individual region. Click on the map to start the geofence as shown below.



You can keep clicking to add multiple points on the screen to end the geofence and close the polygon. This is done by clicking the large red point which was your first point. Your geofence is now created - click **Save**.



## Working with Reports

**Reports** tab is located as the first section within the menu tab on the left side next to the organization logo. Please place your mouse pointer on the menu tab to get a drop-down and hover your mouse on **Reports** to get a full listing. Click on the report you want to generate - this will open a pop-up window at the center of the screen.

A list of default reports will be visible within the tab (e.g., DTC, idle event, offline, speeding). Our support team can help you create custom reports, depending on your requirements.

The screenshot shows the Cypress VUE interface. On the left, the 'Reports' menu is open, displaying a list of reports categorized under 'Manage Reports', 'All Users Report', 'Decommissioned Devices Report', 'Device Detailed Report', 'Diagnostics-Reporting Frequency', 'Diagnostics - Breadcrumb Seasonal Values per vehicle', 'Diagnostics - Engine Hours/Odometer list', 'Diagnostics - Latest Spreader Seasonal values', 'Diagnostics-Material usage (Detail)', 'Fleet - Speed Report', 'Fleet - Vehicle Offline', 'Fleet-Trip and Idle Daily', 'Fleet-Trip and Idle Detailed', 'Summer Operations - Mowing', 'Winter Operations - Cirus Low Battery', 'Winter Operations - Cirus Spreader Version', 'Winter Operations - Material Usage (original)', 'Winter Operations - Material Usage With Cost', 'Winter Operations - Plowing Efficiency', 'Winter Operations - Spreader Resets For Upcoming Season', 'Winter Operations - Spreading Efficiency', 'Winter Operations - Tow Flow', 'Winter Operations - Trip Efficiency', and 'Winter Operations - Spreader Diagnostics (By Distance)'. The 'Winter Operations - Cirus Spreader Version' report is highlighted. The main area shows a map of the Chicago area with various data points plotted. Below the map, there is a table with columns for 'Heading', 'Air Temp', 'Road Temp', 'Blasting', 'Not Spreading', 'Spreading', 'WO\_Seasonal\_S2', and 'Solid Material'. The table contains data for various locations, including 'NE 33°', '9999.00', '9999.00', '✓', '✓', '✓', '-1.00', and 'SALT'.

With the pop-up window, you can run the report and apply filters or graph data. Clicking **Run Report** will map that data on the pop-up window.

The screenshot shows the 'Winter Operations - Cirus Spreader Version' report pop-up window. The window has a title bar and a main content area. The title bar says 'Winter Operations - Cirus Spreader Version'. The main content area has a 'Ready to run' message and a 'Download' button. Below the message, it says 'Update desired parameters and click run report'. On the right side, there is a 'Parameters' section with a 'Period' dropdown set to 'August 29 12:00 AM - 11:59 PM' and a 'Tags' dropdown. At the bottom right, there is a red 'Run Report' button.

All reports can be executed for a custom period setting dates at times in the calendars or select a set time frame such as Today, Yesterday, This Week or Last Week report as shown below.

Parameters

Period\*

December 20 12:00 AM - December

Today  
Yesterday  
**This week**  
Last week

< December 2020 >

Su	Mo	Tu	We	Th	Fr	Sa
		1	2	3	4	5
6	7	8	9	10	11	12
13	14	15	16	17	18	19
20	21	22	23	24	25	26
27	28	29	30	31		

From  
20 December 2020 12:00 AM

To  
27 December 2020 12:00 AM

Select

## Technical Support

### Cypress Solutions Service Support Group

1.844.462.9773 or. 1.778.372.4603

9.00am to 5.00pm PST

support@cypress.bc.ca