

CTM-ONE INTERNAL BATTERY OVERVIEW

Overview

The CTM-ONE wireless gateway supports an optional rechargeable backup battery for last-gasp and tamper detection applications. Any variant of the CTM-ONE can support the battery option. It is a great option to ensure a continuous power supply to the device in any case where the CTM-ONE may lose power, even for a short period of time.



CTM-ONE wireless gateway



CTM-ONE with open gasket

Battery Specifications

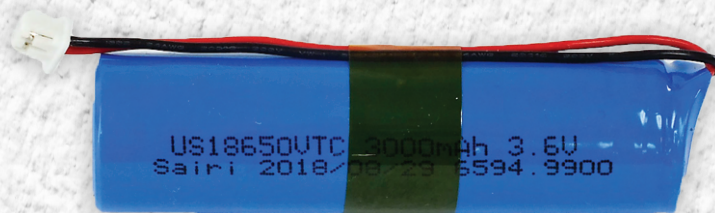
The CTM-ONE uses a cylindrical wide-temperature Li-Ion battery with a protection circuit. Key features include:

- Nominal Voltage: 3.6V
- Nominal Capacity: 3000mAh
- Over Voltage Protection Mode
- Over Current Protection Mode
- Over Temperature Protection Mode

Battery Safety

Li-Ion batteries are sensitive to thermal and mechanical damage and should be handled with care. It is important to follow the following recommendations to maximize battery life and performance:

- DO NOT EXPOSE THE PRODUCT TO FIRE OR EXTREME HEAT (OVER 60°C)
- DO NOT EXPOSE THE PRODUCT TO EXTREME SHOCK
- DO NOT CRUSH THE PRODUCT



CTM-ONE battery



CTM-ONE INTERNAL BATTERY OVERVIEW



CTM-ONE with DC power cable
6954.2031



OBDII vehicle diagnostics cable
6954.2028

Power Sources

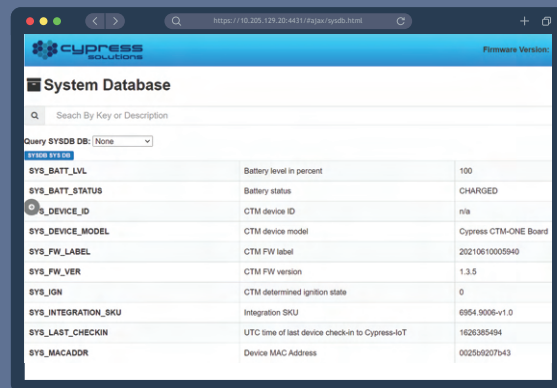
The CTM-ONE wireless gateway must be externally powered via either:

- DC power port
- Vehicle On Board Diagnostics port

When the backup battery is installed, the CTM-ONE will automatically switch to battery power if the external power is lost. Power source information is sent to Cypress VUE or Cypress IOT where the data can be analyzed and reported on.

Troubleshooting

Battery status can be checked from the CTM-ONE web interface. Navigate to System Database and select SYSTEM database. Both the battery status and the level can be viewed.



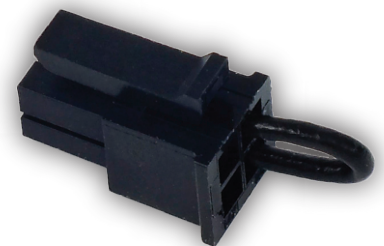
System Database		
Query SYSDB DB: None		
SYS_BATT_LVL	Battery level in percent	100
SYS_BATT_STATUS	Battery status	CHARGED
SYS_DEVICE_ID	CTM device ID	n/a
SYS_DEVICE_MODEL	CTM device model	Cypress CTM-ONE Board
SYS_FW_LABEL	CTM FW label	20210610005940
SYS_FW_VER	CTM FW version	1.3.5
SYS_IGN	CTM determined ignition state	0
SYS_INTEGRATION_SKU	Integration SKU	6954.9006-v1.0
SYS_LAST_CHECKIN	UTC time of last device check-in to Cypress-IoT	1626385494
SYS_MACADDR	Device MAC Address	002560207043

CTM-ONE web interface

Shipping Configuration

During shipping, the CTM-ONE gateway must be turned off. This is achieved by using a shipping jumper connector which is inserted into the power port to cut the power from the battery to the device.

During installation of the CTM-ONE gateway, the installer must remove the shipping jumper connector to enable normal operation.



Shipping jumper connector
6954.3014

+1 (877) 985 2878

www.cypress.bc.ca // support@cypress.bc.ca

@CypressSLTNS f/CypressSolutionsInc in/Cypress-Solutions-Inc



cypress
solutions

Cypress Solutions © | 3066 Beta Avenue | Burnaby, BC | V5G 4K4 | 604-294-4465