

Cypress VUE Fleet Telematics Solution

Reliably track, monitor and control assets to improve productivity and fleet safety in one single platform.



Key Features

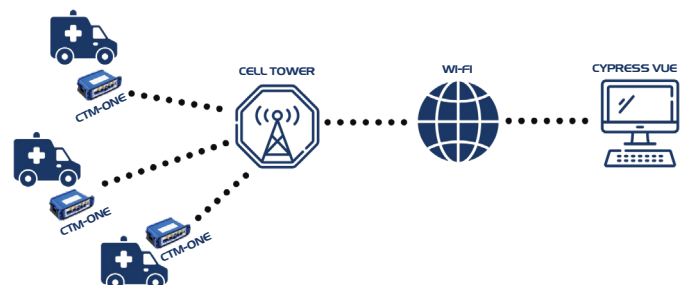
- High availability cloud application for real-time asset tracking.
- Supports various maps including Google™, ArcGIS layers and more.
- Highly extensible platform with support for a variety of applications, IP cameras, third-party sensor systems, etc.
- Customizable web-based interface offering a 360° fleet view, showcasing critical information based on asset type.
- Secure HTTPS login with role-based privileges for secure, scalable deployment.
- Individual vehicle status including vehicle engine parameters (when available), inputs, etc.
- Powerful "Event Rules" for alerts on critical system parameters.
- Configurable reporting engine for customized reports available via a single click or scheduled delivery.
- Data integration via APIs with other business software services.
- Flexible geofence creation, circles, polygons, and routes.

Benefits

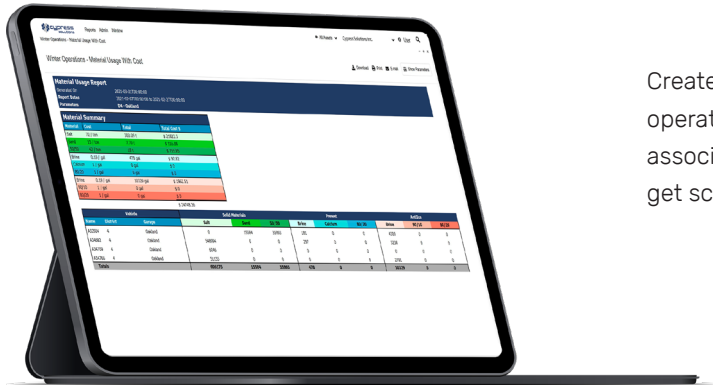
- Know your full fleet at a glance.
- Examine individual vehicles and any associated data from connected sensors and systems.
- Analyze reports and gain insights to optimize your fleets.
- Monitor at a glance parameters such as odometer/trip distance, fuel consumption, idle time, and engine hours for efficient fleet operations.
- Get notified immediately of critical alerts when they happen, via SMS or emails.
- Examine historical data for any asset, at any time.

Overview

Cypress VUE is used in conjunction with fleet-installed hardware like the CTM-ONE or CTM-200 wireless gateway. The gateway sends telemetry data via cellular wireless to Cypress VUE where data is displayed in real-time, in which it's also stored in an internal database. In addition, other equipment in the vehicle can be connected to the gateway, and data from this equipment can be presented in the software. Data communication to the platform does not impact other equipment in the vehicle such as connected laptops, cameras, etc.



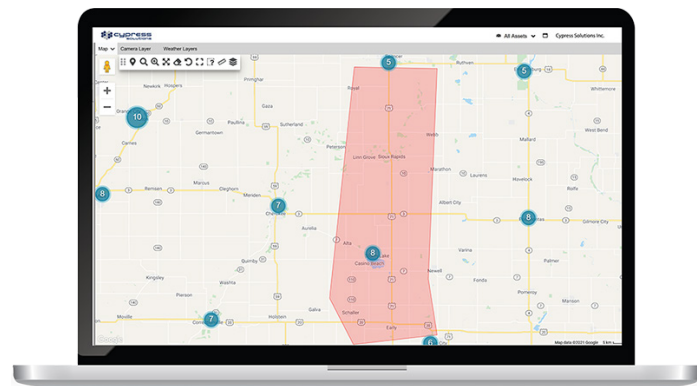
Geofences



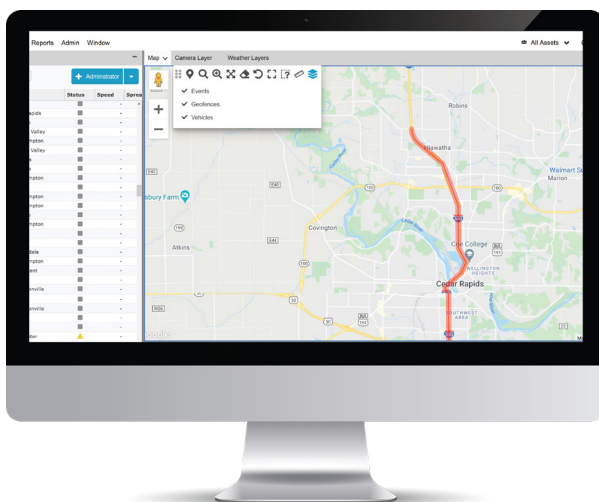
Create overview or custom reports to analyze trends and run smarter operations. You can gain key insights into your fleet operations and their associated costs to improve performance results. Utilize one-click reports, get scheduled deliveries, and gain access to unlimited historical data.

You can create alerts when a vehicle enters or exits a geofence. Generate, edit geofences, and receive instant notifications. Add complex event rules to automate most of your operations.

Custom reports



Route completion



The route completion system provides a real-time view of the fleet's operational state. Leveraging the power of geofences, the system looks at the vehicle state during their road operation and uses proprietary logic to provide completion status on the respective georoute. For example, you can analyze the percentage of roads that have been plowed and sanded within the past X hours during a winter storm.

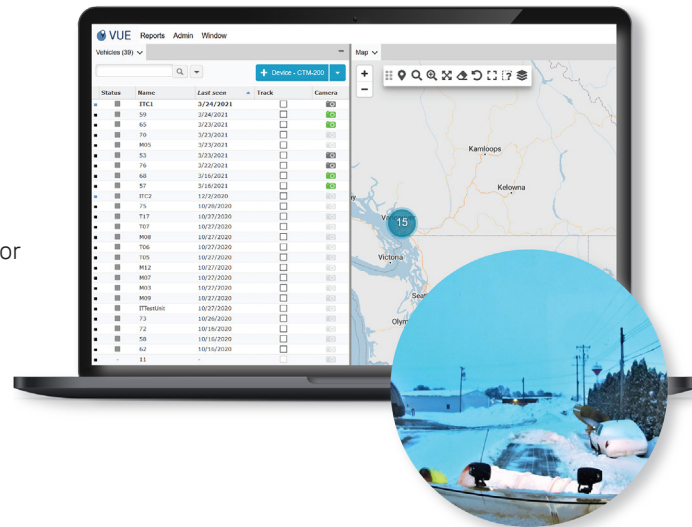
Vehicle diagnostics

Signal	Value	Reported
SG1001 Signal Report		
Current device signal, by user		
Number of devices	15	
A32013 (A32013)		
DTC codes	FFFFFFFF	Tuesday, 19 Jan
Engine Oil Pressure	394	Monday, 17 Nov
MIL	0	Friday, 26 Feb
Total Engine Hours	7058.6	Friday, 26 Feb
Total Fuel Used	331.373	Friday, 26 Feb
Total Vehicle Hours	7058.681	Friday, 26 Feb
VEH INFO	0000171	Tuesday, 19 Jan
Vehicle Name Odometer	14454.83725042002	Thursday, 25 Nov
Vehicle Odometer	232520.204	Thursday, 02 Mar
VIN	1HTWMAAA47386570	Thursday, 18 Dec
A32868 (A32868)		
Total Fuel Used	0	Friday, 22 Nov
Total Engine Hours	4889.288	Friday, 26 Feb
Vehicle Odometer	143098.478	Friday, 26 Feb
VIN	1HTWMAAA47386570	Thursday, 18 Dec
A32920 (A32920)		
DTC codes	007F00003	Friday, 17 Jan
Engine Oil Pressure	156	Friday, 17 Jan
MIL	0	Friday, 17 Jan
Total Engine Hours	4945.7	Friday, 17 Jan
Total Fuel Used	120475.3	Friday, 17 Jan
Total Vehicle Hours	5078.028	Friday, 26 Feb
VEH INFO	CHMS-043A7D1130000000;7C204766;0000000000	Friday, 13 Dec

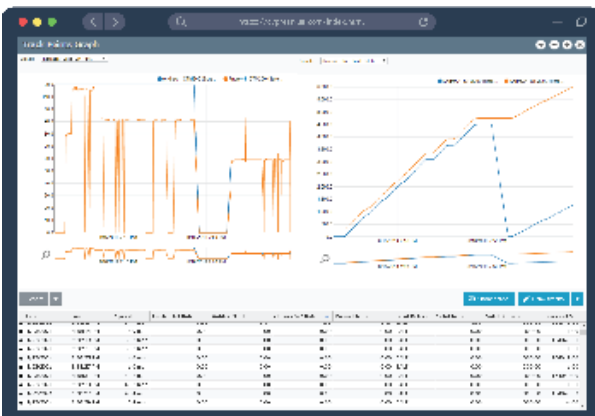
When your CTM hardware is connected to the vehicle CAN Bus, the CTM will detect the malfunction indicator light (MIL) status and the number and type of trouble codes. Set up real-time alerts in Cypress VUE when a MIL light is activated along with the associated trouble codes. Monitor fleet maintenance needs in no time.

A dash camera system can be integrated to your Cypress Solutions hardware. Snapshots will be recorded where and when your fleet operations take place. This will ensure that operations have been completed during a shift as well as assisting in resolving customer disputes. Set up your camera integration with a click of a vehicle button or have photos taken automatically at pre-defined time intervals.

Dash camera integration

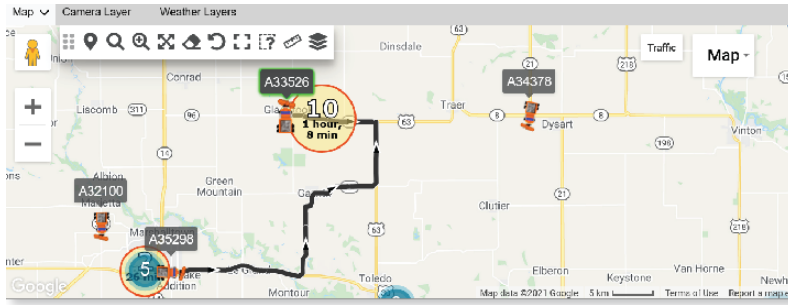


Data visualization



Cypress VUE's advanced reporting tool has built-in intelligence with our firmware to keep track of vehicle parameters. This reduces the amount of data needed to be searched when you run online reports. As a result, you can save time in loading reports and gain data accuracy at the same time. Visualize data with ease with the information you want and when you want it.

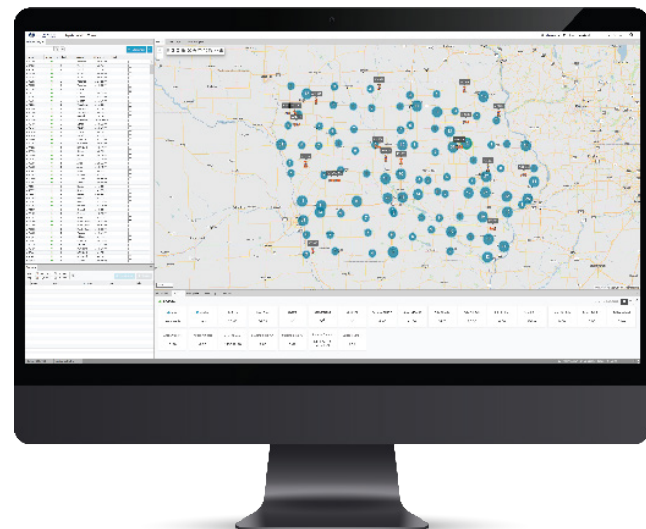
Map functionality



Identify your assets with various standard icons and user-defined icons. Easily group assets for effortless viewing. Cypress VUE supports Google™ as the base map. Other maps are also available including integration of user-supplied map data.

Make use of Cypress VUE's intuitive interface to customize your workspace for each job function. Our platform interface is made up of panels that are organized into a layout, and can be saved as a workspace for individual users.

Workspaces



Contact us to optimize your fleets today

US Toll Free +1 (844) 462 9773

Canada Toll Free +1 (877) 985 2878

www.cypress.bc.ca // info@cypress.bc.ca

f /CypressSolutionsInc
t @CypressSLTNS
in /Cypress-Solutions-Inc

