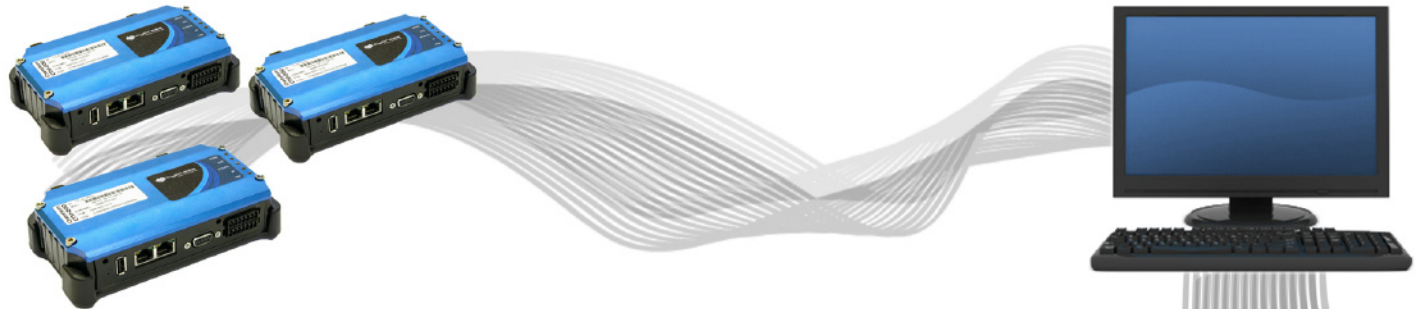
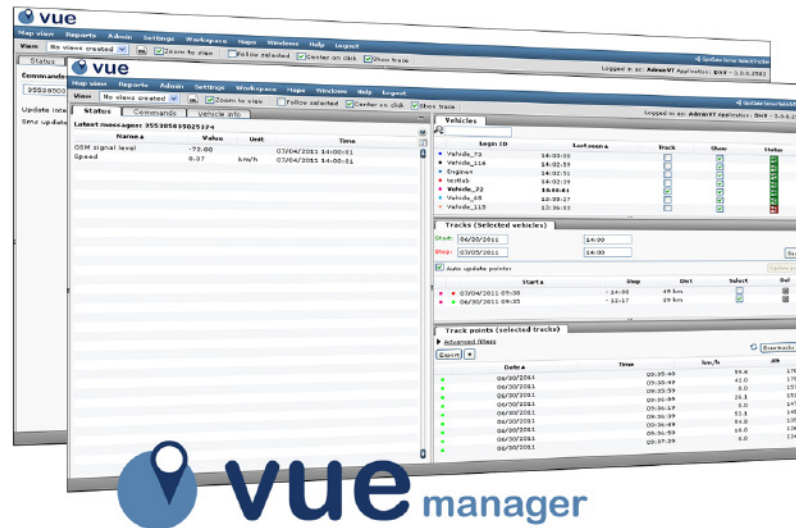


VUE MANAGER

Remote Device Monitoring Software



- Manage
- Access
- Monitor
- Control
- Configure



VUE MANAGER

Manage

- Add or remove gateway devices, modify device information, group devices into departments
- Perform tasks on an individual or groups of devices

Monitor Device Information

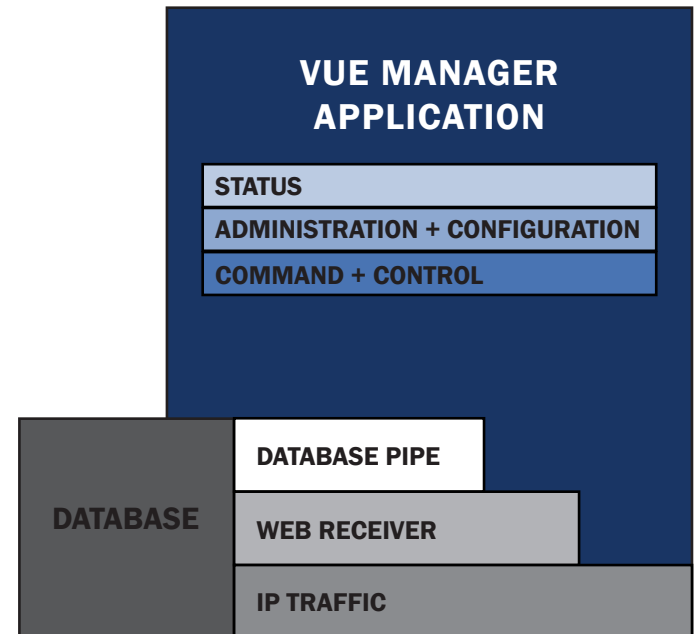
- Radio/Network performance parameters (RSSI, etc)
- GPS data (Lat, Long, speed, altitude and heading)
- GPS performance data
- Wireless data traffic volumes, both transmitted and received
- Firmware revision
- Device configuration

Hassle Free Upgrades

- Automatically upgrade device firmware and configuration

Generate Reports and Alerts

- Create reports for the total amount of data usage for a specific time period
- Create event alerts for the total amount of data exceeded for a specific time period



VUE MANAGER

How it Works

- MySQL® or MS-SQL® database stores VUE Manager data
- VUE Manager communicates to Chameleon gateways via the internet
- Multiple Chameleon gateways are managed and configured simultaneously

Technical Requirements

- Microsoft Windows® XP, 7, or Vista
- Some firewall settings may be required
- Note: Chameleon gateways do not require a routable IP address to work with VUE Manager

