

USING HYPERTERMINAL



Model	-
Revision:	1849.0046#3 revision 1.0

3066 Beta Avenue Burnaby, B.C. V5G 4K4
Phone: 604.294.4465
Fax: 604.294.4471
support@cypress.bc.ca

1 Contents

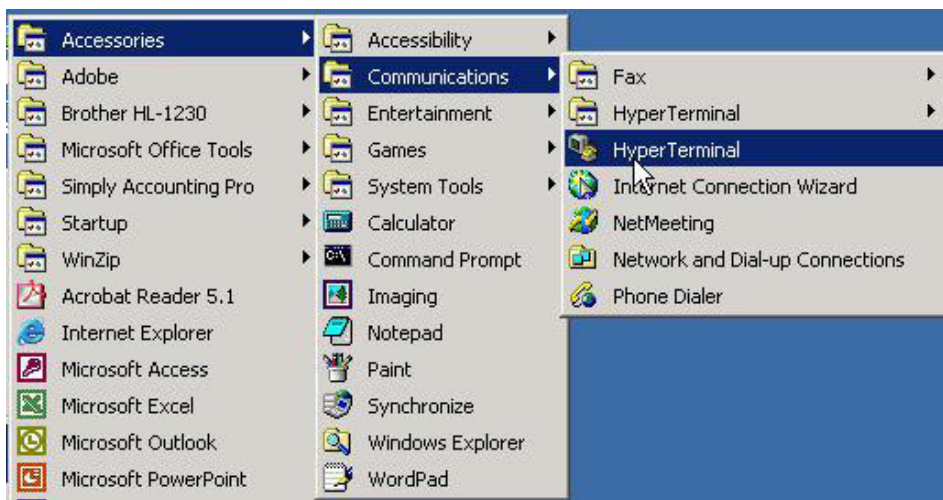
- 1 Contents..... 2
- 2 Revision Control..... 2
- 3 Using HyperTerminal 2
- 4 Technical Support/Warranty: 4

2 Revision Control

Description	Revision	Date
Customer Release	1849.0046#3 revision 1.0	7-Jan-2005

3 Using HyperTerminal

Windows® HyperTerminal is a useful application for configuration and control of the Chameleon modem. To setup HyperTerminal for use with the Cypress Solutions Chameleon modem you need to start the HyperTerminal application and create a new connection (make sure all other Windows® applications that use the COM port are closed):



**Start > Programs >
Accessories >
Communications >
HyperTerminal**
(application, not folder)



Enter a name for this session.
Select an icon if you wish.

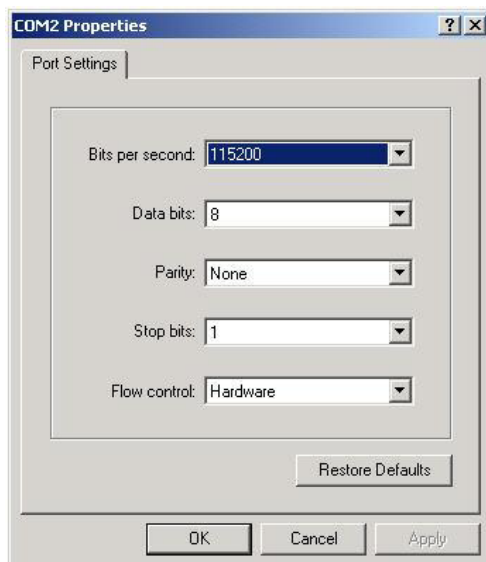
Click **OK**.



Under **Connect using**: select the correct communications (serial) port that the modem will be connected to. (COM2 in the example)

Do not select **Cypress Solutions CTM130 CDMA** from the list if available.

Click **OK**.

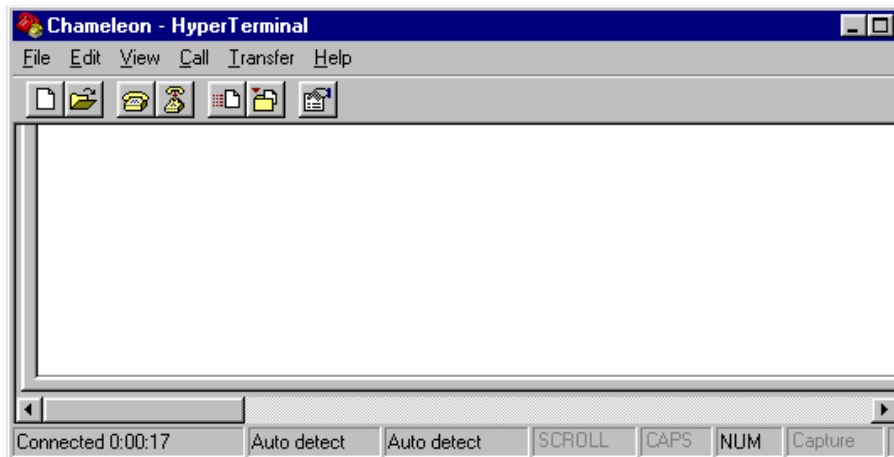


Under **Port Settings**, set **Bits per second** to 115200 (this is the modem's default baud rate – if it has been changed you will need to set HyperTerminal to the same value).

Keep all other settings at default values unless these have been changed on the modem.

Click **OK**.

Hyper Terminal is now ready to use with the Chameleon modem. Ensure that the modem is powered up and connected to the correct serial port with a functional serial cable.



Click **Connect**.

Type **AT** and <Enter> to confirm communications with the modem – it will respond with “OK”.

Enter **ATE1** if the modem is not echoing entered keystrokes.

Refer to the CTM-130/132 AT Command Reference for a complete listing and description of the modem’s AT Commands.

When you exit HyperTerminal you will be asked **Do you want to save session name?** Click **Yes**, and all your settings will be saved for next time.

4 Technical Support/Warranty:

**Cypress Solutions Service
Support Group**

1.877.985.2878 or 604.294.4465

9.00am to 5.00pm PST

support@cypress.bc.ca