

USB CONNECTION



| | |
|-----------|-----------------------------|
| Model | Chameleon CTM-130/132 modem |
| Revision: | 1849.0046#5 revision 1.0 |

3066 Beta Avenue Burnaby, B.C. V5G 4K4
Phone: 604.294.4465
Fax: 604.294.4471
support@cypress.bc.ca

1 1 Contents

| | | |
|---|-----------------------------------|---|
| 1 | 1 Contents..... | 2 |
| 2 | Revision Control..... | 2 |
| 3 | CTM-130/132 USB Connection | 2 |
| 4 | Technical Support/Warranty: | 3 |

2 Revision Control

| Description | Revision | Date |
|------------------|-----------------------------|-------------|
| Customer Release | 1849.0046#5 revision 1.0 | 13-Jan-2005 |

3 CTM-130/132 USB Connection

The CTM-130 and CTM-132 modems provide a DB9 connector configured for RS232 operation. In order to connect the modem to the USB port of a computer it is necessary to use a USB to serial adapter. These are available from a number of sources – check the compatibility of the selected device with the intended computer.

www.cablesbyacc.com

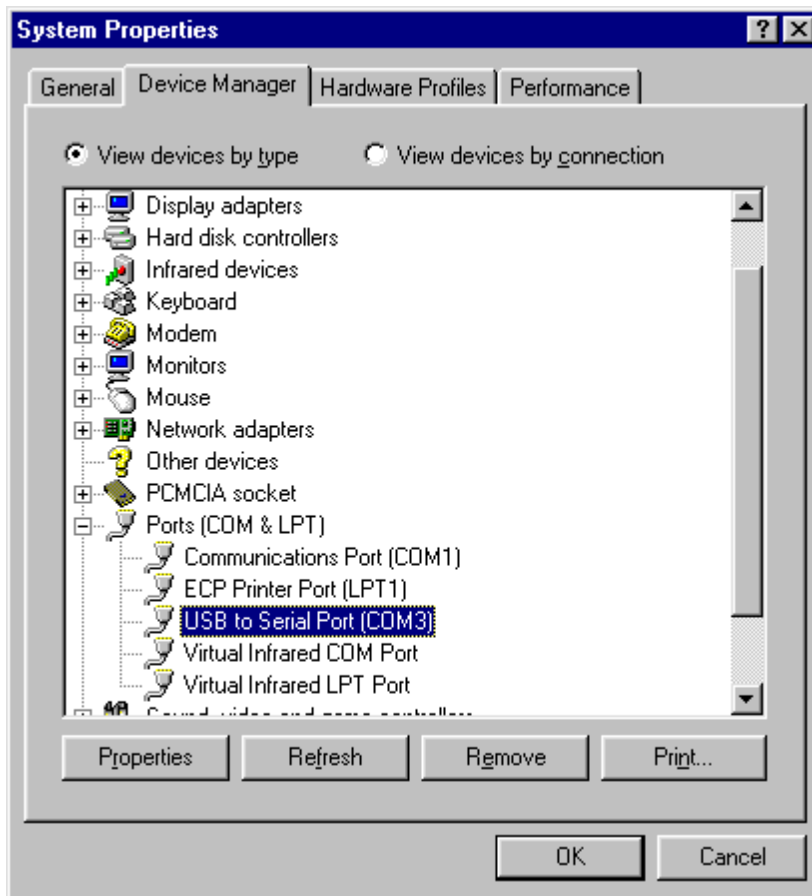
www.byterunner.com

www.industrialethernet.com

www.saelig.com

www.iogear.com

Follow the instructions provided with the chosen adapter to install it on your computer. Take note of the COM port number that was allocated for use during the installation.



If you need to find out which COM port is used at a later time use the **Start/Settings/Control Panel/System** application and go to the **Device Manager** tab to list the **Ports** available.

Note that the adapter needs to be connected in order to show on this list.

Once the COM port is known it is simply a matter of setting up communication applications such as HyperTerminal and Dial-up Connections using this COM port number.

4 Technical Support/Warranty:

**Cypress Solutions Service
Support Group**

1.877.985.2878 or 604.294.4465
9.00am to 5.00pm PST
support@cypress.bc.ca