

# UPGRADE UTILITY NOTES



Model	Chameleon CTM-15X modem
Revision:	# 2023.0033 Revision 2 v5

3066 Beta Avenue Burnaby, B.C. V5G 4K4  
Phone: 604.294.4465  
Fax: 604.294.4471  
[support@cypress.bc.ca](mailto:support@cypress.bc.ca)

## 1 1 Contents

1	1 Contents.....	2
2	Revision Control.....	2
3	Chameleon Upgrade Utility.....	2
4	Operation.....	3
4.1	Step 1.....	3
4.2	Step 2.....	3
4.3	Step 3.....	4
4.4	Step 4.....	4
5	Technical Support/Warranty:.....	5

## 2 Revision Control

Description	Revision	Date
Customer Release	# 2023.0033 Revision 2 v5	25-June-2007

## 3 Chameleon Upgrade Utility

The Chameleon Upgrade Utility is a Windows® application for use with the Chameleon CTM-15x series CDMA 1x/EV-DO wireless data modems. It provides a mechanism to load new embedded firmware with new application features into the modem.

### Requirements:

- CTM-15x firmware version R1.0.0 and up (local upgrade) and R1.0.12 and up (remote upgrade)
- Chameleon Upgrade version 1.2 and up
- Chameleon Chat Utility
- The ability to telnet to the modem (open a cmd window (Start>Run>cmd). A “dos prompt” window will open, at the prompt, enter telnet xxx.xxx.xxx.xxx, where xxx.xxx.xxx.xxx is the IP address. 192.168.1.1 for local upgrade. If the telnet is successful you will get a prompt “Chameleon login:”
- Windows 98, 2000, XP

**Installation:**

Open the zip file and extract the **ChameleonUpgrade.exe** file to a directory of your choice. The Chameleon Upgrade Utility is an executable file which is run simply by double clicking on the file name.

## 4 Operation

### 4.1 Step 1

Save the <CTM15n\_Rn\_n\_n.bin> upgrade file (download from the Cypress Solutions website – select the appropriate file for your modem) to a directory of your choice. *Notes:* Disable all firewall software on your PC before performing this upgrade. DO NOT remove power from the modem during this upgrade process.

### 4.2 Step 2

**Local Upgrade:**

Connect the Chameleon CTM-15x modem's Ethernet port to your PC's Ethernet port or LAN and apply power to the modem. The default local IP address is 192.168.1.1.

**Remote Upgrade:**

*Notes:* This requires a stable network connection and an IP address that can be accessed from the computer doing the upgrade. Open UDP Port 69 on your router firewall. Modems with MAC address prior to 00:10:A1:77:05:03 do NOT have the robust remote upgrade feature (Remote upgrade will still work, but it will not be failsafe)

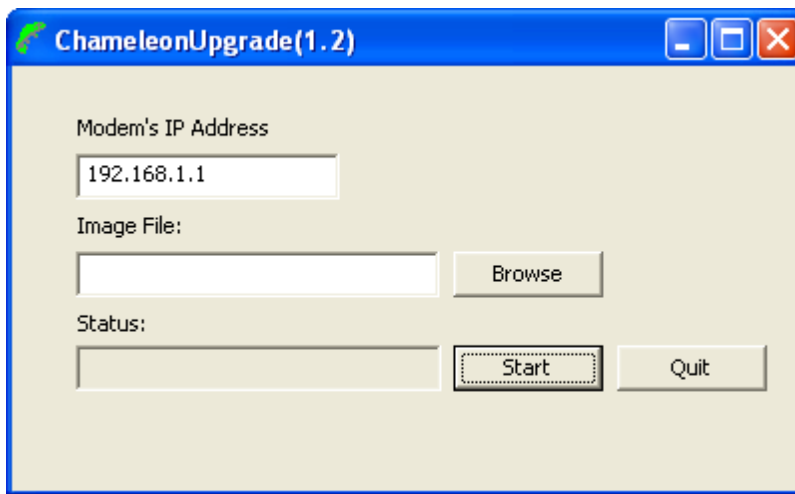
An IP address that can be accessed from the upgrade computer is required for remote upgrade. Obtain the IP address of your CTM-15x modem and verify that you can telnet to the modem (remote telnet must be enabled - cmd rmttelnet 1). If your modem has a dynamic IP address, please follow the steps below to identify the currently assigned IP.

Enable a GPS report that sends a message (**Network Status**), to an IP address and an open UDP port on your computer (ie, port 5005, make sure this port is accessible via your firewall). Use the Chameleon Chat utility to monitor the message; this way if the modem's IP address changes you will know what it is. To set a GPS report, enter the following direct commands:

- cmd gpsremip 1 nnn.nnn.nnn.nnn (where nnn.nnn.nnn.nnn is the IP of your PC)
- cmd gpsremport 1 ppppp (where ppppp is a UDP port to your PC)
- cmd gpsaddmes 1 30 (add a Network Status message to the report)
- cmd gpscond 1 1 30 (this triggers a report out every 30 seconds)
- cmd gpsrep 1 0 3
- cmd save

### 4.3 Step 3

Run the *ChameleonUpgrade.exe* utility:



Enter the modem's IP address.  
For **local upgrade** use: 192.168.1.1.  
For **remote upgrade** use:  
nnn.nnn.nnn.nnn (which is the  
modem IP address obtained from  
the previous steps)

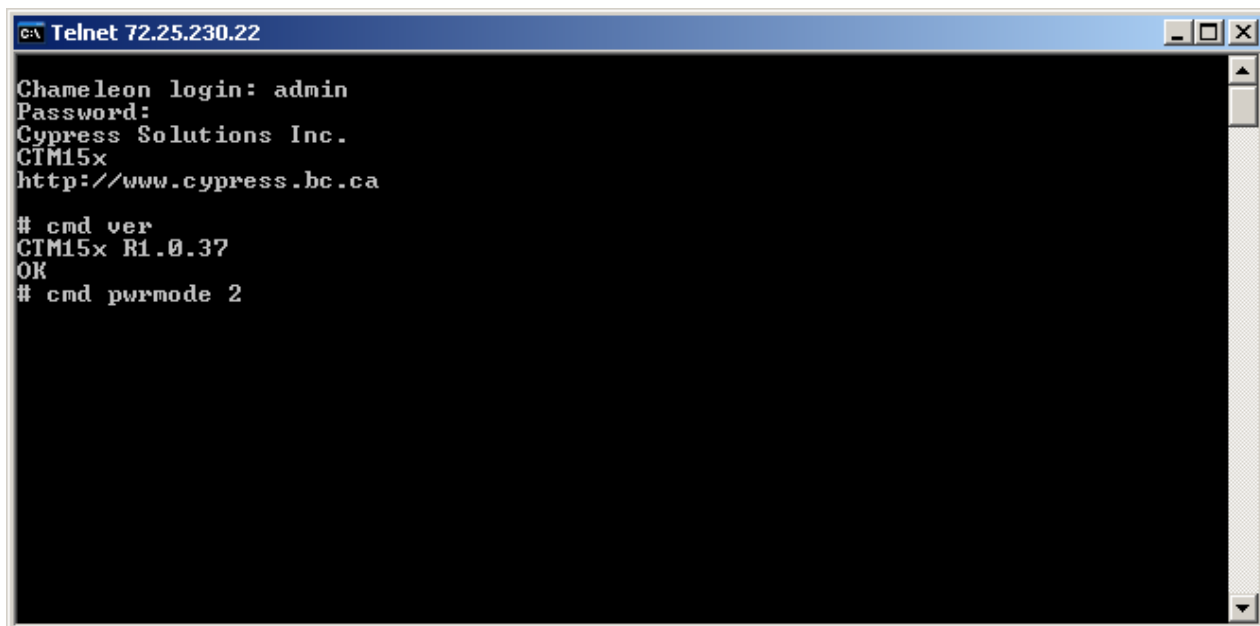
Select the file to download:  
1. Type the path and filename in  
the space provided, or  
2. Click the **Browse** button to bring  
up a dialog to select the upgrade  
file.

Click the **Start** button to begin the upgrade process. Click the button **once** only.

The **Status** field near the bottom of the tool will give you feedback on the download progress. Click the **Quit** button when the upgrade process is complete; the Status box will show "Upgrade complete".

### 4.4 Step 4

Power cycle the CTM-15x modem to load and run the new firmware version. For local upgrade simply disconnect and reconnect the power. For remote upgrade open a telnet session to the modem and enter the command "cmd pwrmode 2".

A screenshot of a Telnet session window titled "c:\ Telnet 72.25.230.22". The window has a black background with white text. The text shows a login prompt "Chameleon login: admin", a password prompt "Password:", and the login successful message "Cypress Solutions Inc. CIM15x http://www.cypress.bc.ca". Below this, the user enters the command "# cmd ver", which returns "CIM15x R1.0.37 OK". The user then enters "# cmd pwrmode 2".

```
c:\ Telnet 72.25.230.22
Chameleon login: admin
Password:
Cypress Solutions Inc.
CIM15x
http://www.cypress.bc.ca

# cmd ver
CIM15x R1.0.37
OK
# cmd pwrmode 2
```

After the power cycle, the telnet session will disconnect. Re-establish a telnet session to the modem again - use the IP address that is reported to the Chameleon Chat utility as the IP address may have changed after the power cycle. Enter the command "cmd ver", the command should return the version of firmware now running on the modem.

## 5 Technical Support/Warranty:

**Cypress Solutions Service  
Support Group**

1.877.985.2878 or 604.294.4465

9.00am to 5.00pm PST

support@cypress.bc.ca